

# CATEGORY 6 UTP PATCHCORD

The electrical performance of patchcord exceeds TIA/EIA category 6 and ISO/IEC Class E specification and it is fully backward compatible with category 6, and 5 connectors. Improved anti-snag feature provides maximum protection from snagging during moves and rearrangements.

## ★ Features

- 24 AWG stranded bare copper
- Good margin in test
- PVC sheath or LSZH sheath
- Universal TIA/EIA 568A or TIA/EIA 568B wire map
- Various lengths and colors

## 🔧 Physical Specifications

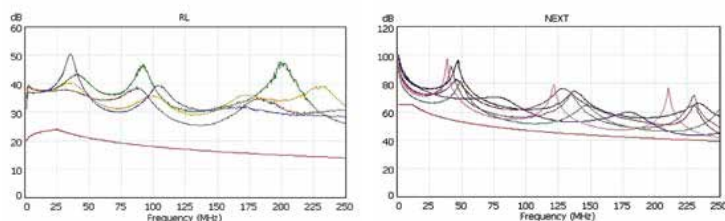
Contact material	Phosphor bronze
Contact plating	Gold 50 micro-inch; nickel 100 micro-inch
Insertion life	750 minimum
Operating temperature	14°F to 140°F (-20°C to 60°C)



## ⚡ Electrical Specifications

TIA/EIA category	6
------------------	---

## 🔧 Hardware Test



## 🛒 Ordering Information

Product Number	Description	Flame	Color
SKP6UM005YE	0.5m cat 6 UTP patchcord	PVC, CM	Yellow
SKP6UM010YE	1m cat 6 UTP patchcord	PVC, CM	Yellow
SKP6UM01FYE	1 feet cat 6 UTP patchcord	PVC, CM	Yellow
SKP6UM10FYE	10 feet cat 6 UTP patchcord	PVC, CM	Yellow
SKP6UL005BL	0.5m cat 6 UTP patchcord	LSZH	Blue
SKP6UL010BL	1m cat 6 UTP patchcord	LSZH	Blue
SKP6UL01FBL	1 feet cat 6 UTP patchcord	LSZH	Blue
SKP6UL10FBL	10 feet cat 6 UTP patchcord	LSZH	Blue